

# → Series 2143

### ■ SUITABLE FOR

Liquids	neutral and non-neutral	
Air, gases and vapours	neutral and non-neutral	



### ■ EXAMPLES OF USE

Dirt trap in straight-through form for use on cryogenic tanks, cryogenic containers, transport containers and systems for the production, storage and transport of cryogenic liquefied gases such as LIN, LOX, CO<sub>2</sub>, LAr, LNG.

- N<sub>2</sub> in pharmaceutical / foodstuffs applications
- O<sub>2</sub> for medical supply equipment
- CO<sub>2</sub> for foodstuffs/ industrial applications
- LAr for welding
- Cooling plants

**The fittings are always manufactured free of oil and grease.**



### ■ MATERIAL



### ■ SPECIFICATION



DN 10 - DN 50

-196°C to +120°C

PN 63

### ■ APPROVALS

EU type examination

TR ZU 032/2013 - TR ZU 010/2011

Requirements

DGR 2014/68/EU

### ■ MATERIAL

Component	Material	DIN EN	ASME
Body	Stainless steel	1.4409	CF3M
Valve upper section	Stainless steel	1.4408 / 1.4404	CF8M / 316L
Screws	Stainless steel	1.4301	304
Seal valve upper section	PTFE mod.	PTFE mod.	PTFE mod.
Strainer	Stainless steel	1.4301	304

<b>s</b>	Standard	for neutral and non-neutral media
----------	----------	-----------------------------------

■ MEDIUM

<b>GF</b>	gaseous and liquid	Cryogenic liquified gases, vapours and liquids, for gaseous oxygen maximum 40 bar / maximum 60 C
-----------	--------------------	---

■ MESH SIZE STRAINER

<b>025</b>	Mesh size 250µm (standard)
<b>010</b>	Mesh size 100µm (on request)

■ MATERIAL STRAINER

	Material	DIN EN	ASME
<b>01</b>	stainless steel	1.4301	304

other materials available on request.

■ AVAILABLE NOMINAL DIAMETERS AND CONNECTION SIZES

Nominal diameter DN	10	15	20	25	32	40	50
<b>Inlet</b>	3/8" (10)	1/2" (15)	3/4" (20)	1" (25)	1 1/4" (32)	1 1/2" (40)	2" (50)
<b>Outlet</b>	3/8" (10)	■					
	1/2" (15)		■				
	3/4" (20)			■			
	1" (25)				■		
	1 1/4" (32)					■	
	1 1/2" (40)						■
	2" (50)						

■ TYPE OF CONNECTION INLET / OUTLET

SE1 / SE1	butt weld SE1 / butt weld SE1	DIN EN ISO 1127 / DIN EN ISO 1127
SE2 / SE2	butt weld SE2 / butt weld SE2	ASTM A312 S10 / ASTM A312 S10
SE3 / SE3	butt weld SE3 / butt weld SE3	ASTM A312 S40 / ASTM A312 S40
SM1 / SM1	socket weld SM1 / socket weld SM1	DIN EN ISO 1127 / DIN EN ISO 1127
SM2 / SM2	socket weld SM2 / socket weld SM2	ASTM A312 S10 / ASTM A312 S10
SM3 / SM3	socket weld SM3 / socket weld SM3	ASTM A312 S40 / ASTM A312 S40
f / f*	female thread BSP-P / female thread BSP-P	DIN EN ISO 228-1 / DIN EN ISO 228-1
NPTF-f / NPTF-f	female thread NPTFf / female thread NPTFf	ANSI B1.20.3 / ANSI B1.20.3

\* Threaded connection and other connections on request.

■ DIMENSIONS AND ORDERING CODE FOR PIPE CONNECTIONS

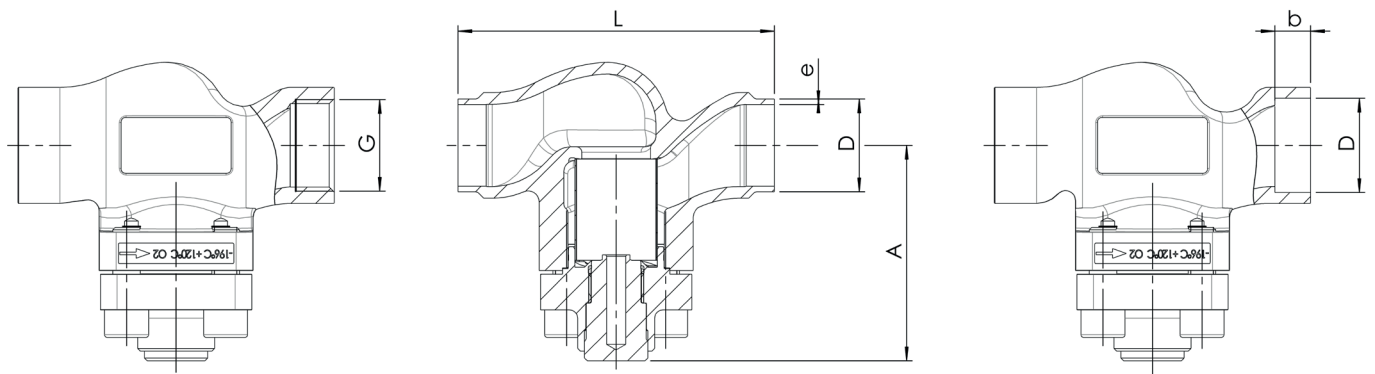
Nominal diameter	DN	10	15	20	25	32*	40	50				
Connection type for pipes according to DIN EN ISO 1127	D	12,0	16,0	17,2	21,3	22,0	26,9	33,7	38,0	42,4	48,3	60,3
Dimensions for butt weld <b>SE1</b> / socket weld <b>SM1</b>	e	1,0	1,5	1,6	2,0	2,0	2,0	2,0	2,0	2,0	2,0	2,0
Order code <b>XX</b>		AA	AD	AE	AF	AG	AH	AJ	AK	AL	AN	A0
Connection type for pipes according to ASTM A312 S10	D	13,72	17,15	21,34	26,67	33,40	42,16	48,26	60,33			
Dimensions for butt weld <b>SE2</b> / socket weld <b>SM2</b>	e	1,65	1,65	2,11	2,11	2,77	2,77	2,77	2,77			
Order code <b>XX</b>		AQ	AS	AU	AW	AY	BA	BC	BE			
Connection type for pipes according to ASTM A312 S40	D	13,72	17,15	21,34	26,67	33,40	42,16	48,26	60,33			
Dimensions for butt weld <b>SE3</b> / socket weld <b>SM3</b>	e	2,24	2,31	2,77	2,87	3,38	3,56	3,68	3,91			
Order code <b>XX</b>		AR	AT	AV	AX	AZ	BB	BD	BF			

\* Other connection types on request.

■ NOMINAL DIAMETERS, CONNECTIONS, INSTALLATION DIMENSIONS

Series 2143: Connection, installation dimensions									
Nominal diameter	DN	10	15	20	25	32	40	50	
Pressure level	PN	63	63	63	63	63	63	63	
Operating pressure	bar	63	63	63	63	63	63	63	
Threaded connection	G	1/4	1/2	3/4	1	-	1-1/4	1-1/2	2
Installation dimensions in mm	L	70	85	100	115	115	130	155	
	b	6	10	13	13	13	13	16	
	A	75	77	75	79	106	104	107	
Weight	kg	0,7	0,9	1,2	1,4	2,2	3,1	4,7	
Kvs-value	m <sup>3</sup> /h	1,6	3,6	6,5	10,2	14,0	19,2	21,2	31,0
Cv-value	gal/min	1,9	4,2	7,6	11,9	16,3	22,4	24,7	36,1

■ MAIN DIMENSIONS, INSTALLATION DIMENSIONS



Series 2143 ■ INDIVIDUAL SELECTION / VALVE CONFIGURATION

Series	Valve version	Medium	Mesh size strainer	Material strainer	Nominal diameter DN	Connection type		Connection size
						Inlet	Outlet	Inlet / Outlet
2143	s	GF	025	01	25	SE1	SE1	AJ / AJ
2143	s	GF	016	01	40	SM3	SM3	BD / BD
2143								
2143								

■ CERTIFICATES / APPROVALS

<b>C01</b>	Factory certificate acc. DIN EN 10204 2.2 (WKZ 2.2)	<input type="checkbox"/>	<b>C06</b>	ATEX evaluation acc. to 2014/34/EU	<input type="checkbox"/>
<b>C02</b>	Test certificate acc. DIN EN 10204 3.1 (WPZ 3.1)	<input type="checkbox"/>	<b>C11</b>	Certification of the production process especially for gaseous oxygen applications by employment of specific materials	<input type="checkbox"/>
<b>C03</b>	Material test certificate acc. DIN EN 10204 3.1 (MPZ 3.1) (pressure retaining part)	<input type="checkbox"/>			<input type="checkbox"/>

■ ADMISSIONS / ACCREDITATIONS

<b>AA1</b>	EC Type examination acc. to Directive 2014/68/EU	<input type="checkbox"/>		<input type="checkbox"/>
<b>AA4</b>	EAC - certificate/declaration with passport for the valve and laser marking of the valve	<input type="checkbox"/>		<input type="checkbox"/>
		<input type="checkbox"/>		<input type="checkbox"/>

■ ENQUIRY

Copy and send to: [order@goetze-armaturen.de](mailto:order@goetze-armaturen.de).

Order form easily to be found online under the section for each series.